

GENERAL TECHNICAL RIDER

Duration: approx. 80min, without break Company: 6 Performers / 1 light technician / 1 sound technician / 1 video technician / 1 production manager / 1 producer

Minimal time schedule for each hosting is 3 days of adaptation and two performances.

Contacts:

tour manager: info@profitart.cz
light, stage: holba.mikolas@volny.cz
video: anna.kriv@gmail.com
sound: andr.shefsky@gmail.com

THIS IS A GENERAL TECHNICAL RIDER OF SITE-SPECIFIC THEATRE PRODUCTION. IT HAS TO BE ADAPTED TO EACH VENUE CHOSEN UPON TECHNICAL PREPARATORY VISIT.

The whole performance will be operated from life post at audience sides. So, all mixers, consoles and boards (sound, light, video) have to be installed close to each other.

THE PRESENTER PROVIDES:

SOUND:

MIXER :

- Mixer: 12 In / 4 Aux (Pre/Post switchable)

OUTBOARD EQUIPMENT:

- Reverb for vocals and guitar microphone (for example Lexicon PCM70 / TC M 2000)
- 1 Hand helds wireless (Shure or Sennheiser) with stand
- 2 Shure SM58 with stands

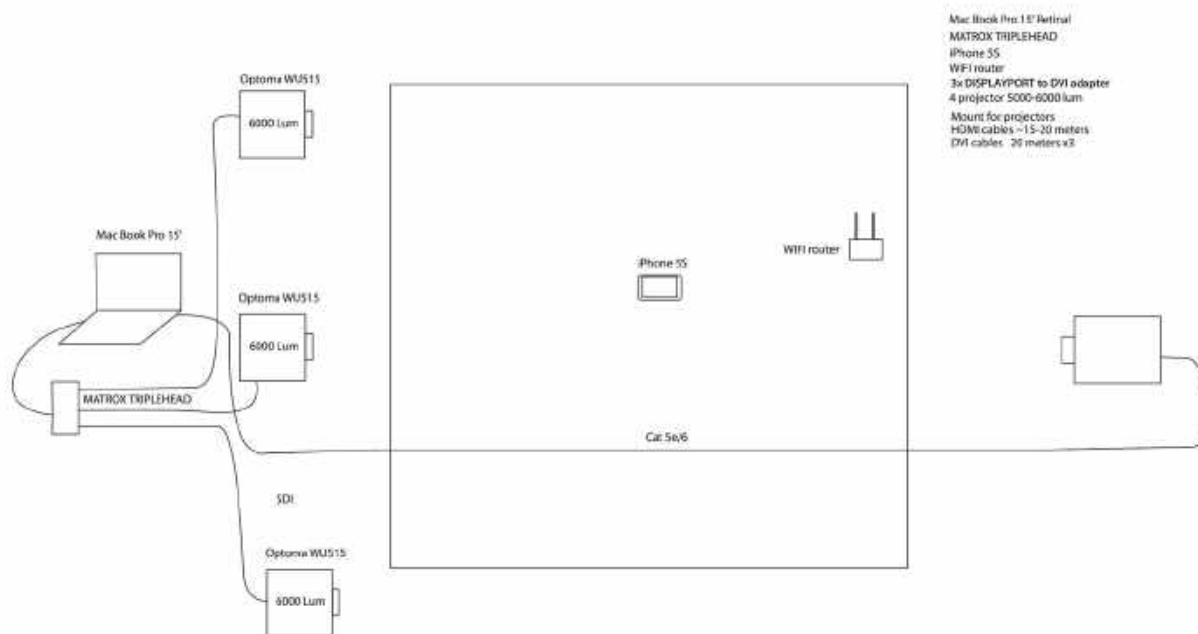
We need an adequate PA which fits for the venue with a subwoofer system.

- 4 Tops front (zero-line) (rigged or floor)
- if necessary: 2 Tops delay-line (rigged or floor)

2 WAY MONITORING: Two small but excellent monitors, one on each side lying on the floor

VIDEO:

scheme bellow, only router, MacBook and iPhones are provided by company

**LIGHTS :**

NUMBERS AND TYPES OF LIGHTS ARE VERY DEPENDS ON YOUR VENUE PARAMETERS, BUT AT LEAST WE NEED:

LIGHTBOARD:

-Chamsys miniwing

LAMP UNITS:

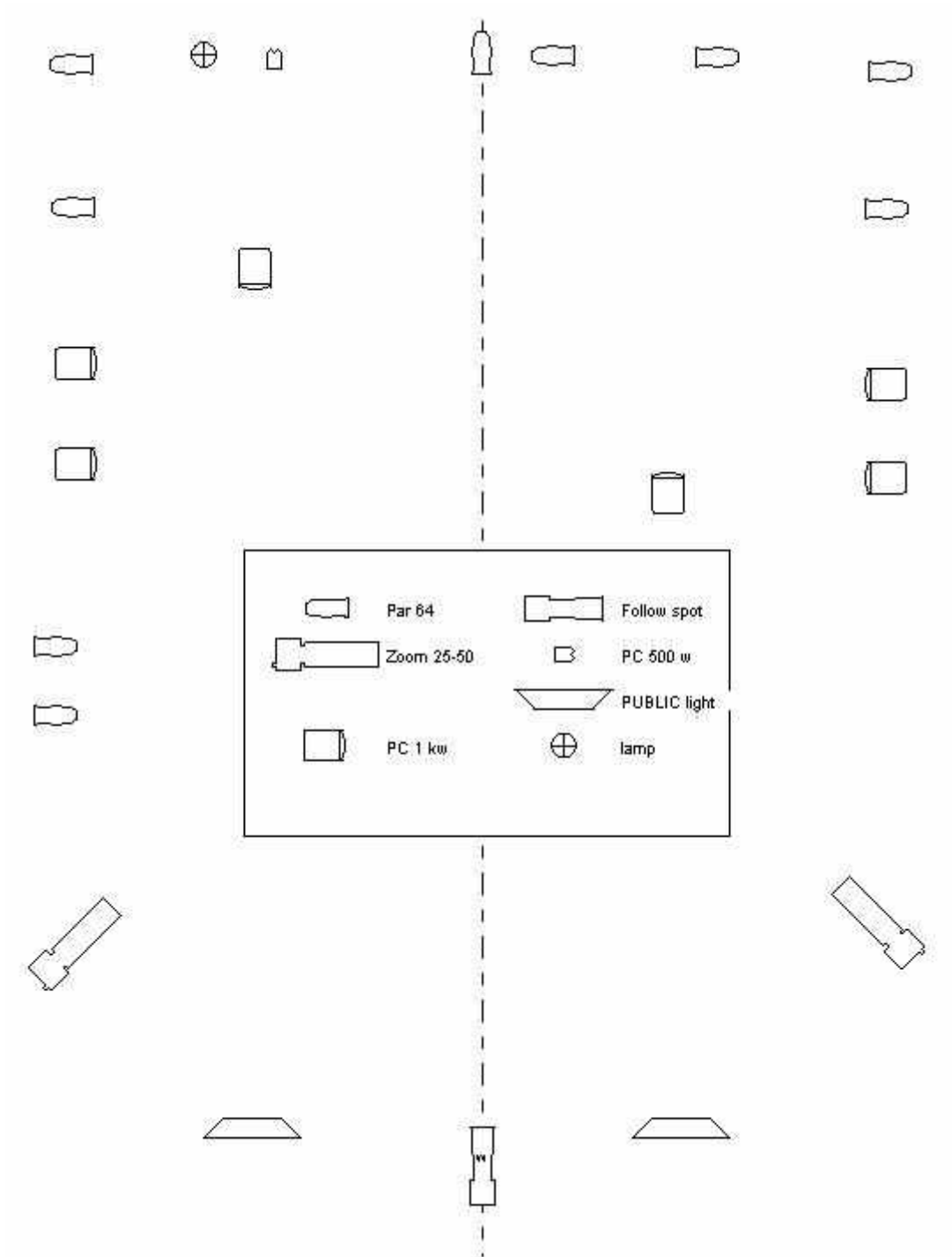
- 2x profile ETC 25-50 with stands
- 6x PC 1kw with barn doors and floor stands
- 2x PC 2kw with barndoors and hanghooks
- 2x PC 500w with -“- -“-
- 10x PAR 64 cp61 with floor stands
- 1x 1kw folow spot with stand and BO iris
- 1x Hazer with DMX control

to each lamp we need colour gel LEE201 and to PARs Rosco 119

DIMMERS:

- 24X 2kw channels
- 1x Non dimm for hazer

LIGHT PLOT:



STAGE:

- Minimum Venue: 10,00m depth 9,00m wide 6,00m height, with possibility to build “catwalk” into the audience part.



STAGE SET: provided by company with some exceptions upon mutual agreement

paper boxes – 20 pieces



5 wooden stand walls with windows and stools of different sizes – 142 cm x 253 cm



8 packs of hay cubes – straw 60cmx50cmx30cm + 17 planks



5 retro chairs
1 metal bed covered with the carpet
4x wallpapers
ceiling lamp
table lamp
table
cabinet with the mirror



20 pieces of white blankets of different and used for projection or as props – some can be provided by the presenter, some need to be taken by the company. Nylon ropes to handle these blankets appx. 30 meters by 5mm diameter.

Out of which white screen curtain about 6x3m approximately on the cable with possibility open and close language-diffile.



LOCAL CREW:

ADAPTATION REHEARSALS AND SET UP - three days prior first performance / STRIKE :

- 3 stage technicians for setup (first day)
- 1 light technician
- 1 sound technician
- 1 video technician

FOR ALL REHEARSALS AND PERFORMANCES:

- 1 video technician Stand By
- 1 sound technician Stand By
- 1 stage technician Stand By

BACKSTAGE:

WARDROBES:

- 6 heated places for performers (2 Ladies and 4 Gentlemen) with enlightened mirrors. • Natural and carbonated Mineral water, coffee, tea, fruits.
- showers, iron, place to hang costumes, possibility to wash and dry costumes overnight

THIS TECHNICAL RIDER IS PART OF THE CONTRACT. CHANGES MUST BE TALKED OVER IN ADVANCE WITH THE RESPONSIBLES OF THE COMPANY.